

**December 2022**

**H.G. EXPRESS**  
moving  
forward



**INSIDE THIS ISSUE**

Management News	2, 3, 4
Member News	5, 6, 7
Word Search	8
Recipes	9
Happy Ads	10
Hall Rental	11
Calendar	12

**ATTENTION RESIDENTS**

Alteration requests and pet requests must be received in the office no later than 5pm on Friday, December 9, 2022 to be reviewed at the Board of Directors meeting on December 15, 2022.

Thank you.

**NOTICE**

Please review page 3 of the Hanover Express in regards to the snow removal rules and moving your vehicles.



**IMPORTANT NEWS**

➔ Please make sure your unit number is written on your check **AND** envelope before it is turned into the office. Checks or money orders must be filled out in black or blue ink **ONLY**.

Thank you.

**NO SENIOR MOVIES UNTIL FURTHER NOTICE**

**NO OPEN MEETINGS UNTIL FURTHER NOTICE**

**VISIT US AT [HANOVERGROVE.COM](http://HANOVERGROVE.COM)**

# MANAGEMENT NEWS

## BOARD OF DIRECTORS

Gary Niedojadlo, President  
gniedojadlo@hanovergrove.com

JoAnn Poznanski, 1st VP  
joannpoznanski@yahoo.com

David Wilson, 2nd VP  
hocman333@aol.com

Patricia Kempf, Treasurer  
pkempf53@gmail.com

Bernice Behrend, Secretary  
bernice\_behrend@yahoo.com



COMMITTEES & CHAIRPERSONS  
Glynn Thompson—Grounds

COMMODITIES  
Carla Boggs

SENIORS - MOVIE NIGHT  
Bernice Behrend

HALL RENTAL  
**(586) 296-5464**  
Debbie Niedojadlo  
hallrental@hanovergrove.com

MANAGEMENT COMPANY  
Professional Property Services  
(248) 644-4650  
Dino DeMare

MANAGEMENT OFFICE  
**(586) 293-5150**  
Jeff Primo, Property Manager  
jprimo@hanovergrove.com



Pamela Melton, Office Manager  
pmelton@hanovergrove.com

Debbie Niedojadlo, Sales  
sales@hanovergrove.com

Theresa Mullins, Office  
tmullins@hanovergrove.com

Wilesa Wright, Recertification-  
WWright@hanovergrove.com

Emily Mullins, Receptionist  
frontdesk@hanovergrove.com

MAINTENANCE OFFICE  
**(586) 294-1910**  
Brad Mogge, Maintenance Supervisor  
bmogge@hanovergrove.com

Ilham Manjo, Maintenance Coordinator  
maintenance@hanovergrove.com

Maintenance Technicians  
Troy Folgman  
David Sullivan  
Shannon Greshan  
Todd Mitchell  
Randy Dockery  
Robert Kovinski  
Clifford Stemmerich

Grounds  
Steven Crandall, Supervisor  
Michael Browne  
John Domanski



**Hanover Grove Cooperative  
wishes you and your families  
a safe and Happy Holiday full  
of fun and joy!**

**IT'S THAT TIME AGAIN TO REMIND YOU ABOUT THE SNOW  
REMOVAL RULES**

**SECTION 107 - VEHICLES, PARKING & DRIVING REGULATIONS**

**107.11** During the winter months, residents must move their vehicles as necessary for snow removal by the Maintenance Department. The following schedule has been determined for snow removal from parking areas. The drivers of the trucks plowing the snow will honk their horns to notify you that they are attempting to plow your parking area.

**YOUR COOPERATION IS REQUIRED.**

**107.11(a)** Members living in **even** addresses (i.e., 31008, 15608, etc.) will have their parking areas plowed between 9:00 am and 12:00 NOON. All cars must be removed from the parking areas before 9:00 a.m.

**107.11(b)** Members living in **odd** addresses (i.e. 31125, 15819, etc.) will have their parking areas plowed between 1:00 pm and 5:00 pm. All cars must be removed from the parking areas before 1:00 p.m.

**107.11(c)** The only exceptions to this rule will be those areas of Darby Lane and Van Avenue that have parking on one side of the street only and the Courts that comprise the 900 blocks of Darby, Sabre, and Van. These parking areas will be plowed in the afternoon, between 1:00 pm and 5:00 pm with the odd addresses.

**107.12** Residents not moving their cars during the appropriate time periods for snow removal may have their vehicles towed away at the owner's expense and receive a \$50.00 Administrative Enforcement Fee.

**107.13** Residents or their guests having inoperable vehicles in the parking areas during snow removal will also be subject to having their vehicles towed away at the owner's expense and receive a \$50.00 Administrative Enforcement fee.

**ATTENTION RESIDENTS**

**If you do not have a Hanover Grove parking decal in your rear window and you have not complied with the above rules we will have no way to notify you and you will be towed away at your expense!**



# MANAGEMENT NEWS



## ATTENTION RESIDENTS

**THE FOOD PANTRY IS ONLY OPEN TO DISTRIBUTE  
FOOD WHEN THE BLUE AND WHITE SIGN IS OUT  
FRONT OF THE GROVE GARAGE .**

**If you do not see the sign, they are not  
distributing food at that time. Please do not  
enter the garage or knock on the door.**

**Thank you!**



**As a friendly reminder, please do not feed the animals (squirrels, birds, rabbits, etc...) around Hanover Grove. This could bring in other unwanted rodents and is against Hanover Grove policy.**



**ATTENTION ALL HANOVER RESIDENTS: THE NEW  
PURCHASE PRICE FOR GARBAGE BAGS WILL NOW BE  
\$19.00 THANK YOU.**

## A WARM WELCOME TO OUR NEWEST MEMBERS



Elunja Skenderi & Family  
Hikmat Chahayed & Family  
Patricia Nemith

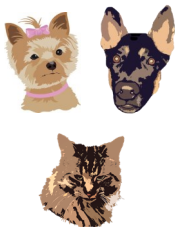


Our prayers and sympathy go out to the families of:  
The Family of Connor Kutschman



### ATTENTION RESIDENTS!

- Register your dog or cat before bringing an animal into your home. We only allow Service Animals and they must be Approved via the Board of Directors.
- Service animals, dogs or cats, must be kept on a leash not to exceed 6 feet.
- Make sure you pick up your dog's or cat's mess, whether walking your pet or cleaning up in your own yard. Pet messes must be picked up immediately.



Thank you.

### ATTENTION RESIDENTS!

If you have a service animal and have not registered it for the 2022 year and are not up to date with your pet's vaccinations, please do so. Not doing so will result in fines.

Thank you.



# MEMBER NEWS



## NEXT COMMODITY PICK-UP (Schedule is weather permitting)



December 9, 2022      9am — 3pm

December 10, 2022      9am— 12pm

### **\*ATTENTION\***

#### LAST MONTH'S VOLUNTEER STATS

**VOLUNTEER HOURS: 56 HOURS      OPENED: 4 TIMES**

**# HOUSEHOLDS SERVED: 344      # OF PEOPLE: 145**

**SPECIAL EVENTS: NONE**

All food will be passed out on a first-come, first-serve basis.

Please make sure to sign up for ROBO Call to be informed!

In accordance with Federal law and U.S. Department of Agriculture (USDA) civil rights regulations and policies, this institution is prohibited from discriminating on the basis of race, color, national origin, sex, age, disability, and reprisal or retaliation for prior civil rights activity. (Not all prohibited bases apply to all programs.)

Any **family** who is interested in receiving food is welcome to come by the new garage any day that commodity pick up is scheduled!

**This Is Per Family Only!!** Any questions call 586-293-5150.

**FOCUS HOPE WILL BE DELIVERED ON  
WEDNESDAY, DECEMBER 14, 2022**

### **ATTENTION RESIDENTS**

We are looking for volunteers to help us with commodities. Anyone interested please contact the office at 586-293-5150

\*Must be able to lift 20 lbs\*

Carla



# MEMBER NEWS

December 2022



## Hanover Grove's Utility Costs for November 2022

Gas \$ 12,072.92  
Water \$ 41,064.77

% of change from same month in 2021  
Gas: +47.3%      Water: +5.1%

Please help us reduce these costs by controlling usage and calling in work orders as needed. Thank you.

## ATTENTION RESIDENTS



**PLEASE CHECK THE NEWSLETTER EVERY MONTH FOR GARBAGE PICK UP DATES. GARBAGE IS TO BE PUT OUT IN BLACK TRASH BAGS ONLY, EVERY SUNDAY AND THURSDAY NIGHT AT 6PM FOR PICK UP THE NEXT MORNING. PLEASE CHECK CALENDER FOR CHANGED DATES DUE TO HOLIDAYS.**



# WORD SEARCH



## Winter Holidays



P T O U P T E Z N M Q C A Y D U W  
 U C A B U C W Q P V F S F C M Y K  
 Z H H T O S A M T S I R H C Q S R  
 S A L Y A K C S C K N T R W J I F  
 F A M I L Y W T O O C J R Y B L Y  
 K L H X K T E H P U S O D F Y Y T  
 W K O I U M L G E W I N T E R A S  
 A C K O F L E I S A N T A Y K D O  
 N D H A S Y U L W X K X L N G I R  
 Z I L A V C A N D L E S H A P L F  
 A G C E K M L O N O B A D M S O W  
 A D P B A K V E U R R R Y W B H V  
 Z F F C J Y U T D O N H A O Y R E  
 T T B J Y G M N N I S T G N V R M  
 O R F Z Q S G E A N E M P S G S K  
 O E X U T J M P O H N R O E M V B  
 Y E L S T N E S E R P Q D M D F B



Family  
 Santa  
 Tree  
 Winter

Candles  
 Kwanzaa  
 Menorah  
 Hanukkah

Frosty  
 Lights  
 Dreidel  
 Christmas

Snowman  
 Presents  
 Elf  
 Holiday





# RECIPES



## Pull-Apart Tree



Prep: 20 Minutes

Cook Time: 20 Minutes

Total Time: 40 Minutes

### Ingredients

- 1 lb. refrigerated pizza dough
- Egg wash (1 egg whisked with 1 tbsp water).
- 7 mozzarella sticks
- 1/4 cup melted butter
- 1/2 cup finely grated Parmesan
- 1 tbsp thinly sliced basil
- 1 tbsp chopped parsley
- 1 tbsp chopped rosemary
- Marinara, warmed ( for serving)

### Directions

1. Preheat oven to 450°. Line a large baking sheet with parchment paper. Cut mozzarella sticks into 1" pieces and set aside.
2. On a floured surface, divide pizza dough into two pieces. Stretch and roll each piece of dough into a long rectangle, then cut dough into 2" squares (you'll need 33 total).
3. Wrap a dough square around each piece of mozzarella, forming a tightly sealed ball. Place balls seam-side down on the baking sheet in the shape of a Christmas tree (they should be touching). Brush egg wash on dough balls and bake until golden, 15 to 20 minutes.
4. Meanwhile, whisk together melted butter, Parmesan and herbs. Brush on baked pizza balls. Serve warm with marinara for dipping. Enjoy!



Prep: 10 Minutes

Make: 30 Minutes

Total: 40 Minutes

## Polar Bear Cookies

### Ingredients

- 12 double stuffed Oreos
- 36 different colored candies (m&m's will work)
- 1 tube black icing
- 12 oz. bag white candy melts

### Directions

1. Lay out a sheet of parchment paper or wax paper to lay the cookies on once dipped.
2. Choose lighter colored candy coated chocolates for the ears and fun, brighter colors for the noses.
3. Select 12 nice looking white candy melts for the muzzle and set aside. Melt the rest of the package. Slide the "ears" into place in between the cookies into the filling and dip the cookies in the melted white chocolate. Lay the cookie the parchment. Place the candy melt on as the muzzle and press gently to form a ridge around the muzzle. Paint a small amount of the white chocolate candy melts onto the "nose" and place it higher up on the muzzle. When the cookies are dried, use the black icing to dot the eyes. Let dry completely before storing in a sealed container.



# HAPPY ADS



WASHER / DRYER REPAIR ON MOST MAKE AND MODELS.

Call Dave Dressler  
(586) 791-4466



Kelly Cares

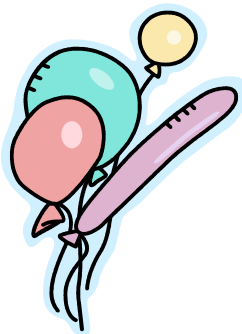
**Kelly McClusky**  
Owner/Operator (248) 804-8702  
Licensed and Insured Kellycares81@gmail.com  
Business/Residential Callkellycares.weebly.com

## Items For Sale:

Aprons by Pebbles  
Men's, Women's, and Children's available  
Half off aprons November/December only:  
**\$10** for Adults (originally \$20)  
**\$7.50** for children (originally \$15)  
Buy for yourself or as a gift.  
Takes cash, PayPal, or checks  
Contact Sandy  
(586) 935-7535  
Instagram: @apronsbypebbles



If you want to put something in the newsletter, submit in writing by the 20<sup>th</sup> of each month to Emily's attention at the office or email her at: [frontdesk@hanovergrove.com](mailto:frontdesk@hanovergrove.com)



# HALL RENTAL INFO

Having A Party?



Rent the Banquet Hall or Lounge

BANQUET HALL	LOUNGE
Holds up to 100 people (fewer if you need a floor/room for	Holds up to 24 people
The Hall Includes:	Lounge Includes:
Table	Chairs
Com	Ice Maker
Refrigerator	Cave
Due	0
<b>BALANCE</b>	.00
P	.00
Rent	or to rent-
Security	er.
Total Du	
Must be p	<b>Information:</b>
Check or money	es not rent the Hall or
<b>NO CASH</b>	Lounge for Holidays or Eves

**HALL AND  
LOUNGE  
CLOSED UNTIL  
FURTHER  
NOTICE**

Your Security Deposit will be returned if the building is clean and in good condition when you leave and no rental Rules have been violated.

You **MUST** be a member of Hanover Grove Cooperative to rent the Lounge and/or the Banquet Hall. And you **MUST** be in attendance for the full duration of the rental event. **NO EXCEPTIONS!**

**Hours:** Mondays: 5:00 pm to 7:30 pm Saturdays: 10:00 am to 1:00 pm

**Email:** hallrental@hanovergrove.com



# December 2022



Sun	Mon	Tue	Wed	Thu	Fri	Sat
				1 Garbage out 6pm	2 Garbage pick up	3
4 Garbage out 6pm	5 Garbage pick up	6	7	8 Garbage out 6pm	9 Commodities 9am-3pm Garbage pick up	10 Commodities 9am-12pm
11 Garbage out 6pm	12 Garbage pick up	13	14 Focus Hope <b>WEATHER PERMITTING</b>	15 Garbage out 6pm	16 Garbage pick up	17
18 Garbage out 6pm	19 Garbage pick up	20	21	22 Garbage out 6pm	23 Garbage pick up	24
25 Merry Christmas Garbage out 6pm	26 Garbage pick up	27	28	29 Garbage out 6pm	30 Garbage pick up	31 NEW YEAR'S EVE