

January 2023

**H.G. EXPRESS**  
moving  
forward



**INSIDE THIS ISSUE**

Management News	2, 3, 4
Member News	5, 6, 7
Word Search	8
Recipes	9
Happy Ads	10
Hall Rental	11
Calendar	12



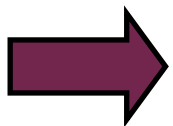
**ATTENTION RESIDENTS**

Alteration requests and pet requests must be received in the office no later than 5pm on Friday, January 13, 2022 to be reviewed at the Board of Directors meeting on, January 19, 2022.

**NOTICE**

Please review pages 2 and 3 of the Hanover Express in regards to winter rules and more.

**IMPORTANT NEWS**



Please make sure your unit number is written on your check **AND** envelope before it is turned into the office. Checks or money orders must be filled out in black or blue ink **ONLY**.

Thank you.

**NO SENIOR MOVIES UNTIL FURTHER NOTICE**

**NO OPEN MEETINGS UNTIL FURTHER NOTICE**

**VISIT US AT [HANOVERGROVE.COM](http://HANOVERGROVE.COM)**

# MANAGEMENT NEWS

## BOARD OF DIRECTORS

Gary Niedojadlo, President  
gniedojadlo@hanovergrove.com

JoAnn Poznanski, 1st VP  
joannpoznanski@yahoo.com

David Wilson, 2nd VP  
hocman333@aol.com

Patricia Kempf, Treasurer  
pkempf53@gmail.com

Bernice Behrend, Secretary  
bernice\_behrend@yahoo.com

## COMMITTEES & CHAIRPERSONS

Glynn Thompson—Grounds

## COMMODITIES

Carla Boggs

## SENIORS - MOVIE NIGHT

Bernice Behrend

## HALL RENTAL

**(586) 296-5464**

Debbie Niedojadlo  
hallrental@hanovergrove.com

## MANAGEMENT COMPANY

Professional Property Services  
(248) 644-4650  
Dino DeMare

## MANAGEMENT OFFICE

**(586) 293-5150**

Jeff Primo, Property Manager  
jprimo@hanovergrove.com

Pamela Melton, Office Manager  
pmelton@hanovergrove.com

Debbie Niedojadlo, Sales  
sales@hanovergrove.com

Theresa Mullins, Office  
tmullins@hanovergrove.com

Wilesha Wright, Recertification-  
WWright@hanovergrove.com

Emily Mullins, Receptionist  
frontdesk@hanovergrove.com

## MAINTENANCE OFFICE

**(586) 294-1910**

Brad Mogge, Maintenance Supervisor  
bmogge@hanovergrove.com

Ilham Manjo, Maintenance Coordinator  
maintenance@hanovergrove.com

## Maintenance Technicians

Troy Folgman  
David Sullivan  
Shannon Greshan  
Todd Mitchell  
Randy Dockery  
Robert Konvinski  
Clifford Stemmerich

## Grounds

Steven Crandall, Supervisor  
Michael Browne  
John Domanski

# MANAGEMENT NEWS

I hope that everybody had a chance to enjoy the holiday season and spend some time with family and friends. I would like to take this opportunity to wish everyone here at Hanover Grove a Happy New Year! I hope that the upcoming year is filled with positivity and prosperity and an abundance of blessings for all to enjoy!

I would also like to take this opportunity to thank the Members here at Hanover Grove who give so much of their time and efforts throughout the year to make this community a great place to live. A HUGE THANK YOU to each of the Board of Directors for all that they do and have done... I just can't say enough about how they volunteer their time and efforts for the betterment of this community. We truly have an amazing Board of Directors here that are dedicated to this community and its' members!

Additionally, I would like to thank the members of the community who continue to volunteer their time to assist with the Membership Committee, the Grounds Committee, and our Free Food Programs. We certainly couldn't provide these services to the Members here if it weren't for the commitment and efforts of each and every one of our volunteers.

As the New Year begins, it's a good time to touch upon a couple of the Rules and Regulations here at Hanover Grove that are pertinent during the winter months...

As mentioned in last month's Newsletter, please make sure to register all of your vehicles at the front office and make sure to place the Hanover provided decal in your vehicle's window.

Whenever we have two inches of snow or more, please make sure to move your vehicle in accordance with the timeframes indicated within the Rules and Regulations (see page 3).

Please ensure that all outdoor furniture and personal items are removed from in front of your unit (including bicycles) and are not stored there for the remainder of the winter.

All outdoor Christmas decorations must be removed before January 25, 2023.

**Members are required to keep heat loss to a minimum during winter months by closing all doors and windows.**

Please understand that the rules and regulations that we have in place help to make this community a great place to live and serve to protect the value of your membership. Following the rules here at Hanover Grove is something that we all can do to make our community a better place to live.

In closing, I would like to share a quote with everyone that seems appropriate for 2023... "Well, we have a whole new year ahead of us. And wouldn't it be wonderful if we could all be a little more gentle with each other, a little more loving, have a little more empathy, and maybe next year at this time we'd like each other a little more..." – Judy Garland

**IT'S THAT TIME AGAIN TO REMIND YOU ABOUT THE SNOW  
REMOVAL RULES**

**SECTION 107 - VEHICLES, PARKING & DRIVING REGULATIONS**

**107.11** During the winter months, residents must move their vehicles as necessary for snow removal by the Maintenance Department. The following schedule has been determined for snow removal from parking areas. The drivers of the trucks plowing the snow will honk their horns to notify you that they are attempting to plow your parking area.

**YOUR COOPERATION IS REQUIRED.**

**107.11(a)** Members living in **even** addresses (i.e., 31008, 15608, etc.) will have their parking areas plowed between 9:00 am and 12:00 NOON. All cars must be removed from the parking areas before 9:00 a.m.

**107.11(b)** Members living in **odd** addresses (i.e. 31125, 15819, etc.) will have their parking areas plowed between 1:00 pm and 5:00 pm. All cars must be removed from the parking areas before 1:00 p.m.

**107.11(c)** The only exceptions to this rule will be those areas of Darby Lane and Van Avenue that have parking on one side of the street only and the Courts that comprise the 900 blocks of Darby, Sabre, and Van. These parking areas will be plowed in the afternoon, between 1:00 pm and 5:00 pm with the odd addresses.

**107.12** Residents not moving their cars during the appropriate time periods for snow removal may have their vehicles towed away at the owner's expense and receive a \$50.00 Administrative Enforcement Fee.

**107.13** Residents or their guests having inoperable vehicles in the parking areas during snow removal will also be subject to having their vehicles towed away at the owner's expense and receive a \$50.00 Administrative Enforcement fee.

**ATTENTION RESIDENTS**

**If you do not have a Hanover Grove parking decal in your rear window and you have not complied with the above rules we will have no way to notify you and you will be towed away at your expense!**

# MANAGEMENT NEWS

## ATTENTION RESIDENTS

**THE FOOD PANTRY IS ONLY OPEN TO DISTRIBUTE  
FOOD WHEN THE BLUE AND WHITE SIGN IS OUT  
FRONT OF THE GROVE GARAGE .**

**If you do not see the sign, they are not  
distributing food at that time. Please do not  
enter the garage or knock on the door.**

**Thank you!**



**As a friendly reminder, please do not feed the animals (squirrels, birds, rabbits, etc...) around Hanover Grove. This could bring in other unwanted rodents and is against Hanover Grove policy.**

**ATTENTION ALL HANOVER RESIDENTS: THE NEW  
PURCHASE PRICE FOR GARBAGE BAGS WILL NOW BE  
\$19.00 THANK YOU.**

## A WARM WELCOME TO OUR NEWEST MEMBERS



Boshra Henin  
Yassa Bakloug  
Kenneth Thompson

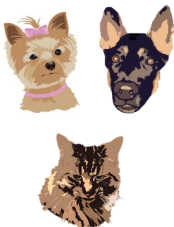


Our prayers and sympathy go out to the families of:



### **ATTENTION RESIDENTS!**

- Register your dog or cat before bringing an animal into your home. We only allow Service Animals and they must be Approved via the Board of Directors.
- Service animals, dogs or cats, must be kept on a leash not to exceed 6 feet.
- Make sure you pick up your dog's or cat's mess, whether walking your pet or cleaning up in your own yard. Pet messes must be picked up immediately.



Thank you.

### **ATTENTION RESIDENTS!**

**2023 Service Animal Registrations will be sent out and are due by January 31, 2023. Please fill out the registration and return it to the office by either dropping it off in the office, placing it in the silver drop box outside the front doors, or emailing it to [frontdesk@hanovergrove.com](mailto:frontdesk@hanovergrove.com). Thank you in advance for your cooperation!**

## NEXT COMMODITY PICK-UP (Schedule is weather permitting)



January 13, 2022 9am — 3pm

January 14, 2022 9am— 12pm



In accordance with Federal law and U.S. Department of Agriculture (USDA) civil rights regulations and policies, this institution is prohibited from discriminating on the basis of race, color, national origin, sex, age, disability, and reprisal or retaliation for prior civil rights activity. (Not all prohibited bases apply to all programs.)

Any **family** who is interested in receiving food is welcome to come by the Grove garage any day that commodity pick up is scheduled!

**This Is Per Family Only!!** Any questions call 586-293-5150.

**FOCUS HOPE WILL BE DELIVERED ON  
WEDNESDAY, JANUARY 18, 2022**

### ATTENTION RESIDENTS

We are looking for volunteers to help us with commodities. Anyone interested please contact the office at 586-293-5150

\*Must be able to lift 20 lbs\*

Carla

# MEMBER NEWS



## Hanover Grove's Utility Costs for December 2022

Gas \$ 21,896.19  
Water \$ 39,483.77

% of change from same month in 2021  
Gas: -2.4%      Water: -10.4%

Please help us reduce these costs by controlling usage and calling in work orders as needed. Thank you.

## ATTENTION RESIDENTS



**PLEASE CHECK THE NEWSLETTER EVERY MONTH FOR GARBAGE PICK UP DATES. GARBAGE IS TO BE PUT OUT IN BLACK TRASH BAGS ONLY, EVERY SUNDAY AND THURSDAY NIGHT AT 6PM FOR PICK UP THE NEXT MORNING. PLEASE CHECK CALENDER FOR CHANGED DATES DUE TO HOLIDAYS.**





# WORD SEARCH



K U P O N P M K V B L T A G M S F K M S E D U O  
 M W A G P O G L A V L D A W P E F F K L C Z F N  
 M I W T V L Q E R N Z J L W O S Z I Y Y A T S I  
 M P Z S S A M V Z A Z V U O T N H M C V L J L A  
 I R W A P R F Z U B K F I O C U S S M N P M I R  
 E O O T S D J A P L E C I L A R C T I C E R P G  
 A P Y U N N S M N M G R L T W Y E F S Y R O P N  
 C K Y I S B O F J W R T W X O O I T A Z I T E I  
 L H W Z B L K W F M L O P Y U R O I T H F S R Z  
 D E B Y X I S N F U I B T E E H E D B I E U Y E  
 R A S K Z Z K E I L M T L S M L U Z S D B A E E  
 A T L K M Z J L T F A R T A W I L R W T D N T R  
 O E E X O A H A B A D K A E C O T W F O O B G F  
 B R D L V R Q C C F L L E E N K N R Q R L V R O  
 W Z I J D D O Z U K R O O H H S I S E F O E E G  
 O T T V D A H J E Y E O C C N R L C J T R S B M  
 N O J E T Q I M T D F T S O T E K L E M N O T X  
 S M F L K I S I S N R Q E T H H V O E Q A I S Y  
 G K Q N L N Y C P I E K F C B C E L Y I C A W T  
 S F V W K J A J L W E Z Y B J I T R E J J T L C  
 I C K B C W G L R X Z C B Z G Q T O M K T N L Z  
 E M A V G V Y S B E I O R U L E I E H A G G I Z  
 T S O R F K C A J V N C O M F O R T E R L K H E  
 E G B H F R I E C M G I C E S K A T E S U M C C

Wool  
 Storm  
 Sled  
 Jack Frost  
 Heater  
 Freezing  
 coat  
 Below Zero

Wood Stove  
 Snowstorm  
 Ski  
 Jacket  
 Heat  
 Fireplace  
 Chill  
 Arctic

Wintertime  
 Snowflake  
 Scarf  
 Icy  
 Frost  
 Fire  
 Blizzard

Windy  
 Snowboard  
 Polar  
 Ice Skates  
 Frosty  
 earmuffs  
 Blanket

Wind  
 Snow  
 Mittens  
 Ice  
 Frostbite  
 Comforter  
 Black Ice

Thermal  
 Slippery  
 Melt  
 Hot Chocolate  
 Freezing Rain  
 cold  
 Bitter Cold



## Cheeseburger Meatloaf



Prep: 20 Minutes  
Cook: 1 Hour  
Total: 1 Hour 20 Minutes

### Ingredients

- 2 pounds ground beef
- 3/4 cup bread crumbs
- 1/2 cup minced onion
- 2 eggs, beaten
- 1 1/2 tsp salt
- 1 1/2 tsp pepper
- 3 cups shredded cheddar cheese
- Ketchup/Mustard for glaze

### Directions

1. Preheat the oven to 350 degrees F
2. Mix beef, bread crumbs, onions, eggs, salt, and pepper just until the mixture comes together. Do not over-mix.
3. If using the pinwheel method, flatten your meat mixture into a 14x18 rectangle on a piece of wax paper.
4. Spread your shredded cheese on the center of your meat mixture. Leave a 3/4 inch border around the edges.
5. Start forming your pinwheel loaf by rolling up your mixture. Pinch both ends, making sure the cheese is fully closed in.
6. Place on a 10x15 baking dish. Cook for 1 hour or until the center reaches 160 degrees F.
7. If adding glaze, put your oven temperature to 400 degrees F and caramelize the glaze for 10 minutes.
8. Let sit for 10 minutes before cutting.



Prep: 5 Minutes  
Make Time: 30 Minutes  
Total Time: 40 Minutes

## Rice Krispy Snowballs

### Ingredients

- 5 tbsp butter
- 1 10 oz bag of marshmallows
- 1/2 cup smooth peanut butter
- Pinch of kosher salt
- 6 cups Rice Krispy cereal
- 30 Reese's Minis
- 1 1/2 cup white chocolate chips, melted
- Sprinkles

### Directions

1. In a large pot over medium-low heat, melt butter. Stir in marshmallows and peanut butter, and stir until mixture is melted. Remove heat and stir in Rice Krispies. Let cool slightly
2. Line a baking sheet with parchment paper. Flatten about a tablespoon amount of Rice Krispies and add a mini Reese's in the middle and roll into a ball. Dip in melted chocolate, then place on prepared baking sheet. Sprinkle with sprinkles and repeat with remaining Rice Krispies. Refrigerate 20 minutes or until chocolate is set.

# HAPPY ADS



WASHER / DRYER REPAIR ON MOST MAKE AND MODELS.

Call Dave Dressler  
(586) 791-4466



Kelly Cares

**Kelly McClusky**

Owner/Operator

**(248) 804-8702**

Licensed and Insured

Kellycares81@gmail.com

Business/Residential

Callkellycares.weebly.com

## Items For Sale:

Aprons by Pebbles

All homemade in a smoke and pet free environment

**150 different aprons to choose from!**

For women, men, and children (kid sizes– S,M,L)

Adults: \$20, Children: \$15,

Mommy + Me sets: \$30, Daddy + son sets: \$30

For yourself or as a gift!

Fall Aprons are also available!

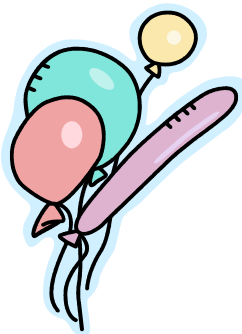
Contact Sandy

(586) 935-7535

Instagram: @apronsbypebbles



If you want to put something in the newsletter, submit your ad in writing by the 20<sup>th</sup> of each month to Emily's attention at the office or email her at: [frontdesk@hanovergrove.com](mailto:frontdesk@hanovergrove.com)



# HALL RENTAL INFO

Having A Party?



Rent the Banquet Hall or Lounge

BANQUET HALL	LOUNGE
Holds up to 100 people (fewer if you need a floor/room for	Holds up to 24 people
The Hall Includes:	Lounge Includes:
Table	Chairs
Com	Ice Maker
Refrigerator	Cave
Due	0
BALANCE	.00
P	.00
Rent	or to rent-
Security	er.
Total Due	
Must be p	Information:
Check or money	es not rent the Hall or
NO CASH	Lounge for Holidays or Eves

**HALL AND  
LOUNGE  
CLOSED UNTIL  
FURTHER  
NOTICE**

Your Security Deposit will be returned if the building is clean and in good condition when you leave and no rental Rules have been violated.

You **MUST** be a member of Hanover Grove Cooperative to rent the Lounge and/or the Banquet Hall. And you **MUST** be in attendance for the full duration of the rental event. NO EXCEPTIONS!

**Hours:** Mondays: 5:00 pm to 7:30 pm Saturdays: 10:00 am to 1:00 pm

**Email:** hallrental@hanovergrove.com

# January 2023

Sun	Mon	Tue	Wed	Thu	Fri	Sat
1  Garbage out 6pm	2 Garbage pick up	3	4	5 Garbage out 6pm	6 Garbage pick up	7
8 Garbage out 6pm	9 Garbage pick up	10	11	12 Garbage out 6pm	13 Commodities 9am-3pm Garbage pick up	14 Commodities 9am-12pm
15 Garbage out 6pm	16 Garbage pick up	17	18 Focus Hope <b>WEATHER PERMITTING</b>	19 Garbage out 6pm	20 Garbage pick up	21
22 Garbage out 6pm	23 Garbage pick up	24	25	26 Garbage out 6pm	27 Garbage pick up	28
29 Garbage out 6pm	30 Garbage pick up	31				