

June 2025

H.G. EXPRESS
moving forward



INSIDE THIS ISSUE

Management News	2, 3, 4
Member News	5, 6, 7
Word Search	8
Recipes	9
Happy Ads	10
Hall Rental	11
Calendar	12



ATTENTION RESIDENTS

Please see page 3 for the
Grove Cove Splash Pad Rules and
Regulations, as well as the schedule
for the 2025 season! Thank you.

ATTENTION RESIDENTS

The Hanover 2025 Yard Sale
dates will be
SATURDAY, JUNE 7TH and
SUNDAY, JUNE 8TH.

IMPORTANT NEWS

➡ Alteration requests and pet requests must be received
in the office no later than 5pm on Friday, June 13, 2025
to be reviewed at the Board of
Directors meeting.
Thank you.

NO SENIOR MOVIE NIGHT UNTIL FURTHER NOTICE

NO OPEN BOARD MEETINGS FOR THE SUMMER!

VISIT US AT HANOVERGROVE.COM

BOARD OF DIRECTORS

Gary Niedojadlo, President
gniedojadlo@hanovergrove.com

Sharon Maniaci, 1st VP
sharonm901@yahoo.com

Garry Young, 2nd VP

Patricia Kempf, Treasurer
pkempf53@gmail.com

Bernice Behrend, Secretary
bernice_behrend@yahoo.com

COMMITTEES & CHAIRPERSONS
Glynn Thompson—Grounds

COMMODITIES
Sharon Maniaci

SENIORS - MOVIE NIGHT
Bernice Behrend

HALL RENTAL
(586) 296-5464
Debbie Niedojadlo
hallrental@hanovergrove.com

MANAGEMENT COMPANY
Professional Property Services
(248) 644-4650
Dino DeMare

MANAGEMENT OFFICE
(586) 293-5150
Jeff Primo, Property Manager
jprimo@hanovergrove.com

Pamela Melton, Office Manager
pmelton@hanovergrove.com

Debbie Niedojadlo, Sales
sales@hanovergrove.com

Theresa Mullins, Office
tmullins@hanovergrove.com

Wilesha Wright, Recertification-
WWright@hanovergrove.com

Emily Mullins, Receptionist
frontdesk@hanovergrove.com

MAINTENANCE OFFICE
(586) 294-1910
Ilham Manjo, Maintenance Coordinator
maintenance@hanovergrove.com

Maintenance Technicians
Troy Folgman
David Sullivan
Shannon Greshan
Robert Konvinski
Clifford Stemmerich
Robert Pettry

Grounds
Steven Crandall, Supervisor
Michael Browne
Ryan Cornman
Aidan Stemmerich

MANAGEMENT NEWS

MANAGEMENT NEWS

I'm very happy to share with everyone that The Grove Cove is open again and available for residents of all ages to enjoy. Please note that anyone younger than twelve (12) years old must be accompanied by an adult at all times while using the Splash Pad.

The Grove Cove's hours of operation are 11:00am thru 7:00pm Tuesday thru Saturday. Sunday's hours are from 12:00 (noon) thru 6:00pm and we will be closed on Mondays for maintenance. Please note that the outdoor temperature must be above 70 degrees in order for the Grove Cove to remain open.

The Grove Cove will have a monitor in place after 5:00pm daily and also during regular operating hours on the weekends. You must use your assigned key fob for entry and both you and your guests are required to follow the rules at all times. Please remember that The Grove Cove is under 24hour video surveillance.

The Splash Pad is an amazing amenity for residents of all ages to enjoy. We encourage everyone to invite their friends and relatives to join you but kindly remind you that this is a "Family Fun Area" and should be treated as such.

Summer is one of my favorite times of the year and I look forward to seeing everyone out there. Who knows... you might even catch me or a Board Member under the bucket on a hot summer day!

Lastly, I'd like to remind everyone that we are planning on hosting a community wide Yard Sale on Saturday, June 7th and Sunday, June 8th. We're hoping that the membership here can utilize this opportunity to make some additional space in their units and hopefully put some money in their pockets as well.

**Congratulations to
Sharon Maniaci and
Garry Young
on their elected Board
Member positions!**

MANAGEMENT NEWS

THE GROVE COVE RULES AND REGULATIONS

- Use of The Grove Cove is “AT YOUR OWN RISK”- No Lifeguard on Duty.
- Hanover Grove Cooperative will not be responsible for lost or stolen items.
- Everybody must rinse off at the shower before entering The Grove Cove.
- All children under the age of 12 MUST have adult supervision
- Children who are not toilet trained MUST wear a swim diaper.
- No food, drinks, chewing gum, or glass containers allowed in The Grove Cove.
- Smoking, vaping and tobacco products and or alcoholic beverages are NOT allowed.
- No animals on or near The Grove Cove or surrounding fencing.
- Climbing on Grove Cove fixtures and fencing is strictly prohibited.
- Covering The Grove Cove drains is strictly prohibited.
- No inflatable pool toys, squirt guns, water soakers, water balloons, or other recreation equipment allowed.
- No skate boards, roller blades, bicycles, scooters, etc.

THE GROVE COVE SCHEDULE

SCHEDULE IS WEATHER PERMITTING

Tuesdays - Saturdays: 11:00 am to 7:00 pm

Sundays: 12:00 pm to 6:00 pm

Mondays: CLOSED



An Open Letter Regarding Marijuana Usage at Hanover Grove

Dear Members:

If you are not aware, Hanover Grove Cooperative was constructed pursuant to a housing program initiated by Congress. As a result, the Cooperative entered into agreements which required it to be governed by the Department of Housing and Urban Development (HUD). This agreement required the Cooperative to adhere to regulations of the Federal Government as it relates to housing.

One of the primary directives from HUD is that the **Cooperative must remain drug free, which includes all illegal drugs, including marijuana.** When the Cooperative adopted its Rules and Regulations and Occupancy Agreement it included prohibitions against such drug use.

Therefore, by the Cooperative documents and Federal Law, members of Hanover Grove Cooperative are forbidden from the use of any illicit drug as defined by Federal Law. Further, the Rules and Regulations and your Occupancy Agreement requires that the Cooperative provide each member peaceful enjoyment of their townhome.

Each member must refrain from actions which deny other members peaceable enjoyment of their townhome. Loud noises such as blaring TV's or sound systems, late night parties, and vacuuming after 10:00 p.m. are examples of denying your right to peaceable enjoyment. Smoking marijuana is another example because of the strong smell which permeates through the walls and subjects your neighbors and their children to this nuisance denying them peaceable enjoyment.

Recently, the State of Michigan enacted a series of new laws which modify the use and enable restrictions on the use of marijuana. A section of that law, MCL 333.26427(c)(3) states that the owner (Cooperative) can prevent the smoking or cultivation of marijuana. Therefore, despite the fact that you may have a medical marijuana card authorizing the use, you are prohibited from smoking marijuana at the Cooperative for the two reasons set forth; 1) restriction imposed by HUD regarding illicit drugs as defined by Federal Law, and 2) the State law prohibiting its use in a multi-family environment.

Although the Cooperative cannot endorse the use of medical marijuana due to Federal law, for those who have the medical need for its use, there are many other products available that will not adversely affect your neighbors.

This letter should serve as notice that the Cooperative will aggressively enforce the restriction of the use of illicit drugs, including smoking marijuana in any form. Such use may result in the possible loss of your membership and eviction.

Sincerely,

Hanover Grove Management

A WARM WELCOME TO OUR NEWEST MEMBERS



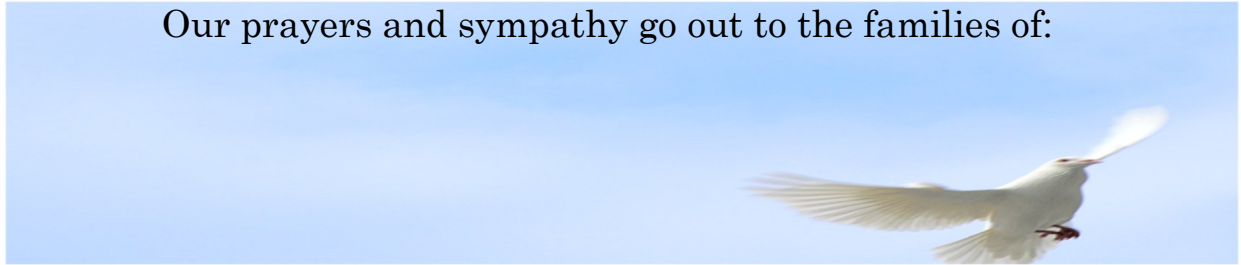
Linh Pham and Family

Linda Trongo

Kirollos Yacoub

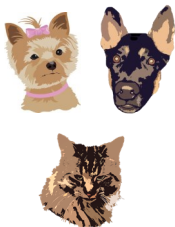


Our prayers and sympathy go out to the families of:



ATTENTION RESIDENTS!

- Register your dog or cat before bringing an animal into your home. We only allow Service Animals and they must be Approved via the Board of Directors.
- Service animals, dogs or cats, must be kept on a leash not to exceed 6 feet.
- Make sure you pick up your dog's or cat's mess, whether walking your pet or cleaning up in your own yard. Pet messes must be picked up immediately.



Thank you.

ATTENTION RESIDENTS!

If you have a service animal and have not registered it for the 2024 year and are not up to date with your pet's vaccinations, please do so. Not doing so will result in fines.

Thank you.

NEXT COMMODITY PICK-UP

June 12th (Thursday) – 8:30a.m. until 4:30p.m.

June 13th (Friday) – 8:30a.m. until 2:30p.m.

June 26th (Thursday) – 8:30a.m. until 4:30p.m.

June 27th (Friday) - 8:30a.m. 2:30p.m.

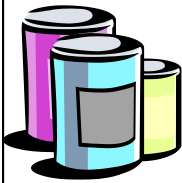
ATTENTION

LAST MONTH'S VOLUNTEER STATS

VOLUNTEER HOURS: 129 HOURS OPENED: 4 TIMES

HOUSEHOLDS SERVED: 325 # OF PEOPLE: 656

SPECIAL EVENTS: NONE



All food will be passed out on a first-come, first-serve basis.

Please make sure to sign up for One-Call to be informed!

In accordance with Federal law and U.S. Department of Agriculture (USDA) civil rights regulations and policies, this institution is prohibited from discriminating on the basis of race, color, national origin, sex, age, disability, and reprisal or retaliation for prior civil rights activity. (Not all prohibited bases apply to all programs.)

Any **family** who is interested in receiving food is welcome to come by the new garage any day that commodity pick up is scheduled!

This Is Per Family Only!! Any questions call 586-293-5150.

**FOCUS HOPE WILL BE DELIVERED ON
WEDNESDAY, JUNE 18, 2025**

ATTENTION RESIDENTS

We are looking for volunteers to help us with commodities. Anyone interested please contact the office at 586-293-5150

Must be able to lift 30 lbs

Commodities



Hanover Grove's Utility Costs for May 2025

Gas \$ 21,350.53
Water \$ 45,100.17

% of change from same month in 2024

Gas: +28% Water: +5.9%

Please help us reduce these costs by controlling usage and calling in work orders as needed. Thank you.

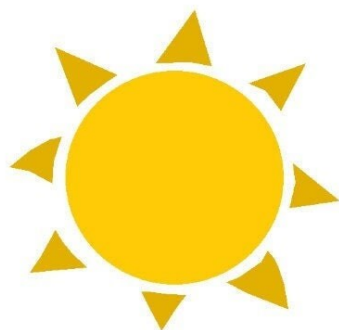
ATTENTION RESIDENTS



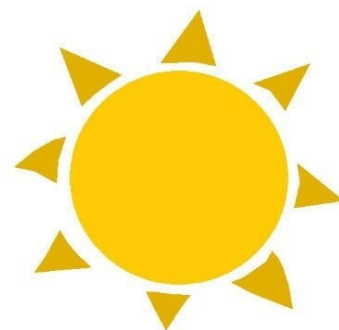
PLEASE CHECK THE NEWSLETTER EVERY MONTH FOR GARBAGE AND RECYCLABLE PICK UP DATES. GARBAGE IS TO BE PUT OUT IN BLACK TRASH BAGS ONLY, EVERY SUNDAY AND THURSDAY NIGHT AT 6PM FOR PICK UP THE NEXT MORNING. RECYCLING PICK UP IS MONDAYS. PLEASE CHECK CALENDER FOR CHANGED DATES DUE TO HOLIDAYS.



WORD SEARCH



Summer Word Search



SUMMER	G A R D E N Y S M B M T O L S
SUNSHINE	N I A R M E L E S E E R W O U
SWIM	U C I N C I P E A S I A M S N
BOAT	L M L I N O I T A C A V R P S
CAMP	P O P S I C L E Q L D E K I H
HIKE	U I P E C A M P I O O L F C I
GARDEN	Y T N S R E T L M D N T R E N
PLAY	P W N S O E P A T G N E D X E
BEACH	A U G R I A D Y B O A Y A T E
JULY	R L J U L Y G R S A S O U P A
AUGUST	K E F G L C E A T H I R G A S
PARK	B A L Y P A E N O C R E U R D
PICNIC	S H O R T S O O H A E H S H R
POPSICLE	U Y P E M N O S A E S S T D E
ICE CREAM	C H E T A M C L Y B G M R E S
SHORTS	X L A O V Z R C O J B R I N S
DRESS	F O S E M A E R C E C I O W L
TRAVEL	B L O S S U M M E R W B M O S
VACATION	
SEASON	

Fruit Mousse



Prep: 5 Minutes

Make: 5 Minutes

Total: 10 Minutes

Ingredients

- 8 1/2 ounces (about 2 1/4 cups) frozen berries or other fruit
- 2 tablespoons sugar (or use sugar, honey, maple syrup, or stevia extract to taste)
- 1 large egg white
- Fresh berries and whipped cream for serving (optional)

Directions

1. Add fruit to the bowl of a food processor. Process to a rough puree, about 1 minute. Add the sugar or another sweetener and pulse briefly to combine. If you're using a different sweetener, add a small amount at a time to taste.
2. Add the egg white and process until smooth and fluffy and the mixture has lightened in color and doubled or tripled in volume, 2 to 3 minutes.
3. If the mixture clings to the sides of the food processor's bowl too much (this may happen if the blade doesn't extend all the way to the sides of the bowl), transfer the mixture to a normal medium-sized bowl and beat with a mixer fitted with the whisk attachment until fluffy.
4. Spoon the mousse into glasses and top or layer with fresh berries and/or whipped cream (optional). Serve immediately or store in the refrigerator for up to 2 hours (because this mousse has very little sugar in it, it's not very stable and it won't hold for longer than that).



Prep: 10 Minutes

Cook: 7 Minutes

Total: 17 Minutes

Air Fryer Sweet Chili Chicken Melt

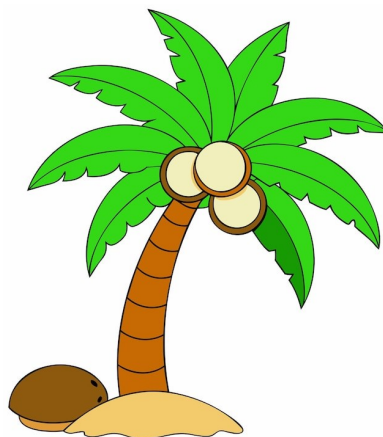
Ingredients

- 1 wrap
- 1/2 cup cooked chicken minimum per person
- 1-2 heaped tbsp light mayo
- 1 tbsp sweet chilli sauce
- 1/4 cup cheddar
- Salt and pepper to taste

Directions

1. Mix the chicken, mayo, chilli, cheese together in a bowl.
2. Add the sweet chilli chicken mixture to a wrap.
3. Spray the outside of the sweet chilli chicken wrap with oil and brush.
4. Pop the sweet chilli chicken wrap in the air fryer for 7 minutes at 375°F and enjoy!

HAPPY ADS

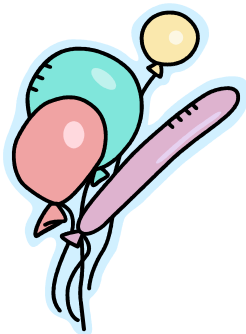


Looking for someone to
help with some
yard/landscaping work,
willing to pay!

Contact Becky
(586) 222-4340

If you would like to put something in
the newsletter, submit your ad in
writing by the 20th of each month to
Emily's attention at the office or email
her at: **EMullins@hanovergrove.com**

If you want to put something in the newsletter, submit your ad in writing by the 20th of each month to Emily's
attention at the office or email her at: **frontdesk@hanovergrove.com**



HALL RENTAL INFO

Having A Party?

Rent the Banquet Hall



BANQUET HALL

Holds up to 90 people

(fewer if you need a dance floor/room for a D.J.)

The Hall Includes:

Tables & Chairs,
Commercial Stove,
Refrigerator, Freezer, Ice Maker,
and Microwave

Rental Fees:

Rental Fee: \$350.00
Cleaning Fee: \$150.00
Total Due: \$500.00

Must be paid when booking your event.

**Check or money order.
NO CASH**

For Your Information:

**Hanover does not rent the Hall for
Holidays or Eves**



Please call (586) 296-5464 during the business hours listed below to make reservations. Thank you.

You **MUST** be a member of Hanover Grove Cooperative to rent the Banquet Hall and you **MUST** be in attendance for the full duration of the rental event.
NO EXCEPTIONS!

Hours: Mondays, Wednesdays, Thursdays: 8:30 a.m.- 5:00 p.m.

Tuesdays: 8:30 a.m.- 6:30 p.m.

Email: hallrental@hanovergrove.com

June 2025

Sun	Mon	Tue	Wed	Thu	Fri	Sat
1 Garbage out 6pm	2 Garbage pick up	3	4	5 Garbage out 6pm	6 Garbage pick up	7 YARD SALE
8 YARD SALE Garbage out 6pm	9 Garbage pick up	10	11	12 Food Pantry From 8:30am Until 4:30pm Garbage out 6pm	13 Food Pantry From 8:30am Until 2:30pm Garbage pick up	14
15 Garbage out 6pm	16 Garbage pick up	17	18 Focus Hope	19 Garbage out 6pm	20 Garbage pick up	21
22 Garbage out 6pm	23 Garbage pick up	24	25	26 Food Pantry From 8:30am Until 4:30pm Garbage out 6pm	27 Food Pantry From 8:30am Until 2:30pm Garbage pick up	28
29 Garbage out 6pm	30 Garbage pick up					